

aiSon™ Focus

Adaptive shape maximises contact of the probe with the skin
Made of highly flexible and robust latex-free material. Sustains up to 20 kg of pressure

Compatible with any coupling agent, including antiseptic

Attachable to the probe
Easy and quick set-up and removal

Suitable for all standard transducers

Improve your diagnostic

- Prevents image deformation due to compression of tissues by probe pressure
- Provides full, uninterrupted images with fewer artefacts, even when scanning bony surfaces
- Increases image contrast of superficial structures
- Enhances consistency in results from operators with different degrees of experience
- Facilitates proper standards of care for ultrasound-guided interventions

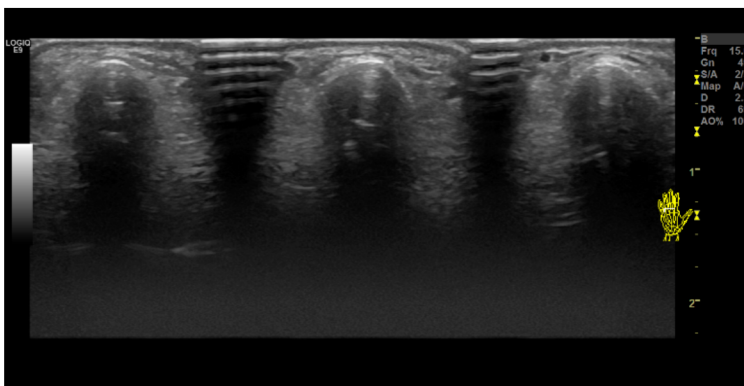
Optimise procedures

- Ensures continuous contact with the skin throughout the procedure, even on bony surfaces
- Moves smoothly with the probe
- Can accelerate image acquisition in challenging areas
- Reduces gel re-application
- Protects the probe
- Allows dynamic shift of focus
- Enables tracing of anatomical structures without interruption

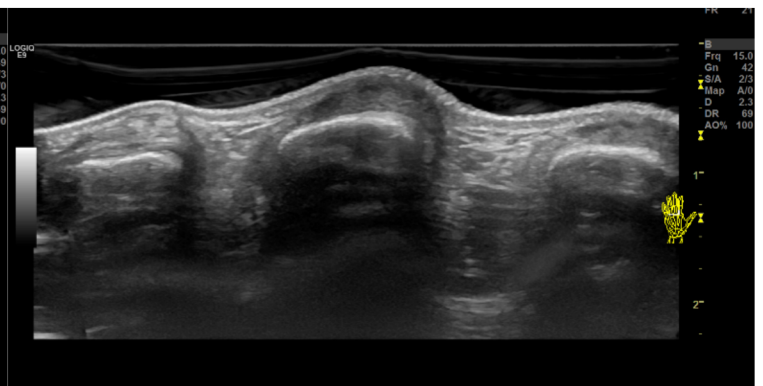
The world's only adaptive ultrasound pad

Ensure patient comfort, even in painful areas

- Enables reduced pressure to avoid compressing sensitive areas
- Requires less gel



Without aiSon™ Focus



With aiSon™ Focus